

TABLE A -- TAPER LENGTHS							
Taper Types (m)	Regulatory Speed Limit before Work Begins (km/h)						
	≤ 50	60	70	80	90	100	110 120
Merge Taper Length	1/4	35	55	160	190	210	230 250 280
Lane Shift Taper Length	1/4	30	50	80	100	110	120 130 140
Downstream Taper Length	1/4	30	30	30	30	30	30 30 30
TCP, Signal, and Shoulder Taper Length (min. 5 devices)	1/4	5	8	15	15	15	15 15 15
Minimum Tangent Length between Tapers	1/4	30	60	160	190	210	230 250 280
Run-in Length on Centreline	1/4	40	50	60	60	70	80 90 100

TABLE B -- DEVICE SPACING LENGTHS							
Device Spacing (m)	Regulatory Speed Limit before Work Begins (km/h)						
	≤ 50	60	70	80	90	100	110 120
Construction Sign Spacing	A	40	60	80	100	150	150 200 200
Buffer Space	B	30	40	60	80	110	140 170 200
Channellizing Device Spacing for Tapers	C	10	10	15	15	15	15 15 15
Channellizing Device Spacing on Curves and Tangents	D	10	10	30	30	40	40 40 50

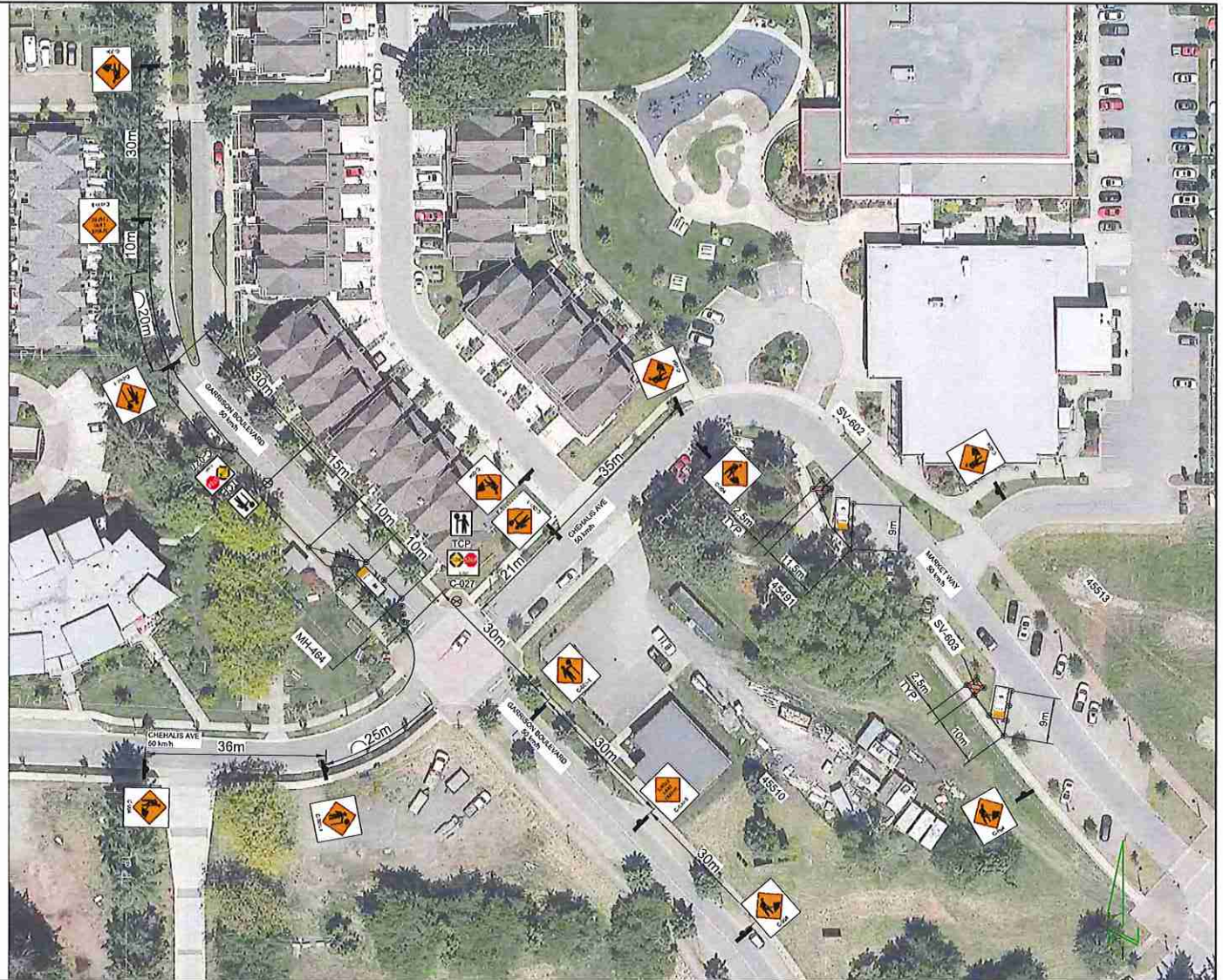
LEGEND	
○ Flexible Drum	🚚 Paint Truck
● Tubular Marker	🚓 Escort Truck
● Cone	🚗 Chaser Vehicle
🚚 Sign	🚗 Vehicle Mounted Rear Crash Attenuator
👤 Traffic Control Person	🚧 360° Flashing Light
🚚 Work Activity Area	🚚 Portable Traffic Signal
🚚 Work Truck	🚧 Barricade and Fencing
🚚 Shadow Vehicle	🚧 Flashing Arrow Board (FAB)
🚚 Shadow Vehicle #1	🚧 Flashing Arrow Board (FAB) in caution mode
🚚 Shadow Vehicle #2	📡 Dynamic Message Sign (DMS)
🚚 Buffer Vehicle	

**NOTES:**

1. THE WORK REQUIRING THE TRAFFIC CONTROL MEASURE INVOLVES THE PLACING AND SPLICING OF FIBER OPTIC CABLE FROM MH-464 TO 45513 MARKET WAY VIA SV-602 & SV-603. THE DURATION OF USE OF THIS MEASURE WILL BE UNTIL THE WORK IS COMPLETED.
2. LANE CLOSURES ARE AS NOTED IN THIS LAYOUT.
3. TIMING OF THE WORKS WILL BE FROM 8:30AM TO 4:30 PM.
4. LOCATION OF THE WORK ZONE IS AS INDICATED ON THIS PLAN FOR CONSTRUCTION.
5. THE MEASURES SHOWN IN THIS TRAFFIC MANAGEMENT PLAN IS IN ACCORDANCE TO THE "BC TRAFFIC MANAGEMENT MANUAL FOR WORK ON ROADWAYS (2015 INTERIM)". CHANGES TO THIS LAYOUT MAY BE MADE BY THE TRAFFIC CONTROL PERSON IN CHARGE TO REFLECT FIELD CONDITIONS.
6. PRIORITY ACCESS WILL BE GIVEN TO EMERGENCY VEHICLES.
7. ALL DIMENSIONS ARE IN METRES.

**CONTACT INFORMATION:**

SHANE BELFRY  
778-870-9562



**BC ONE CALL**

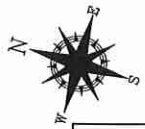
CALL BEFORE YOU DIG  
1 800-474-4811  
VANCOUVER AREA  
604-237-1949



CONSTRUCTION	PERMIT	DESIGN ENGINE	DATE
REV. DESCRIPTION	SUBMITTED DATE:	SCALE: NTS	DATE: 04/26/18
REV. DESCRIPTION	REV. SUB DATE:	ASSOCIATED DRAWINGS	
REV. DESCRIPTION	REV. SUB DATE:		
REV. DESCRIPTION	APPROVED:		
REV. DESCRIPTION	DATE:		
REV. DESCRIPTION	AS CONSTRUCTED DATE:		
REV. DESCRIPTION	CONTRACTOR:		

DESIGN ENGINE	DATE
04/26/18	04/26/18

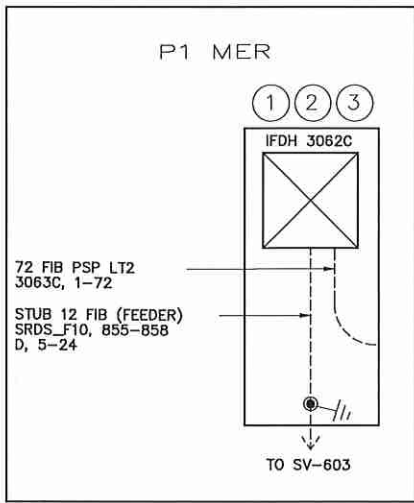
PROPOSED TRAFFIC CONTROL LAYOUT TO ACCOMMODATE TELECOM CABLE PLACING & SPLICING	
FROM THE INTERSECTION OF GARBISON BLVD & CHELLALIS AVE TO 45513 MARKET WAY, GILLOWACK, BC	SYSTEM NAME: 2032655 TTCP
	SHEET 1



SPLITTER 1  
SRDS\_F10, 855  
SPLITTER 1, 1-32

SPLITTER 2  
SRDS\_F10, 856  
SPLITTER 2, 1-32

3062C FIBER XCON  
IN 1-4 = SRDS\_F10, 855-858  
IN 5-12 = D, 105-112  
IN 13-44 = SPLTR1, 1-32  
IN 45-76 = SPLTR2, 1-32  
IN 77-84 = SPL, 65-72  
OUT 1-72 = 3062C, 1-72

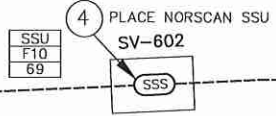


- ① PLACE 72F IFDH WALL MOUNT IN MER SAP# 2373559
- STENCIL IFDH 3062C  
IN: SRDS\_F10, 855-858  
IN: D, 5-24  
OUT: 3062C, 1-72
- ② FUSION SPLICE (4)
- ③ PLACE (2) - 1/32 SPLITTERS SAP# 2291057
- ⑤56 FLAGGING FOR ⑤
- ⑤57 ACCEPTANCE FEEDER OTDR (4)
- ⑤58 ACCEPTANCE FEEDER POWER METER (4)

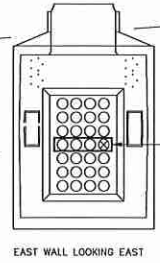
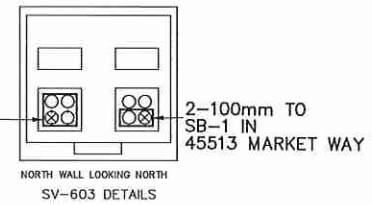
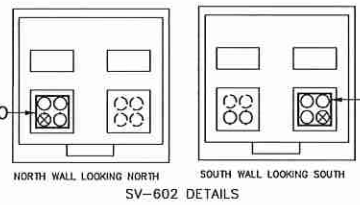
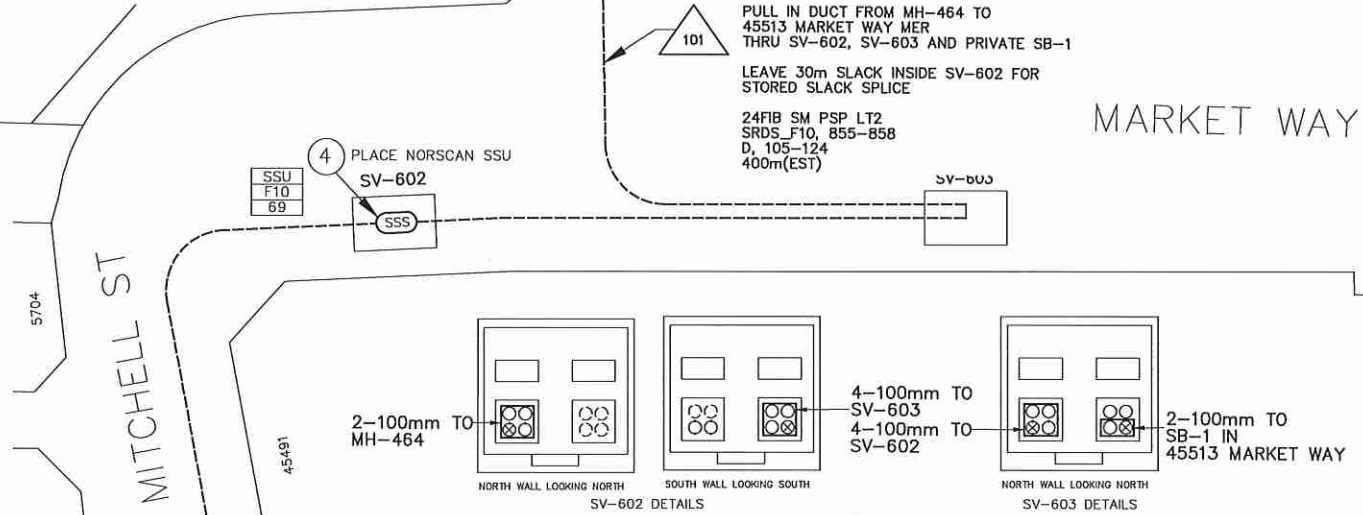
101 PULL IN DUCT FROM MH-464 TO 45513 MARKET WAY MER THRU SV-602, SV-603 AND PRIVATE SB-1

LEAVE 30m SLACK INSIDE SV-602 FOR STORED SLACK SPLICE

24FIB SM PSP LT2  
SRDS\_F10, 855-858  
D, 105-124  
400m(EST)



- ⑤56 FLAGGING FOR ⑤
- ⑤57 ACCEPTANCE FEEDER OTDR (4)
- ⑤58 ACCEPTANCE FEEDER POWER METER (4)



**WARNING**  
TELUS FIBRE OPTIC CABLE

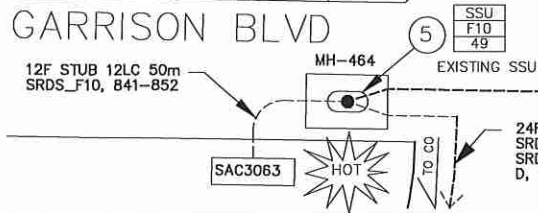
24FIB SM PSP LT2  
SRDS\_F10  
NW# 2623765C

DO NOT TOUCH

16 YELLOW TAGS

CONSTRUCTION NOTE:  
SEAL DUCTS AROUND MER AND LAST SB

SITE CONTACT  
DAVE @ C&D ELECTRIC  
604-316-6150



24FIB PSP LT PRY  
SRDS\_F10, 841-854  
SRDS\_F10, 855-858  
D, 19-24

DESIGN: LOUIS LI 604-454-4147	FOX: WA SCALE: N.T.S. DATE: FEB. 20 2018
ASSOCIATED DRAWINGS 26344111, 2634421C, 2323580U	
PREPARED BY: telecom design	C.O. CODE SRDS

PROPOSED IFDH IN 45513 MARKET WAY CITY OF CHILLIWACK SARDIS CO		
C.O. CODE SRDS	2632685C SHEET 1 OF 1	SYSTEM NAME: 2632685C
TELUS		A3

MH-464 DETAILS  
- NTS -